

The Royal Wolverhampton



NHS Trust

Health Scrutiny Committee November 2016

David Loughton CBE
Chief Executive



Contents



Headwinds Facing RWT

Accountable Care Organisation (ACO)

RWT Vision

Current State of Play

RWT ACO priorities

Key Enabling Factors

Questions

Headwinds Facing RWT



Unprecedented National Financial Gap

Fragmented Care Delivery

Funding Gap- particularly in Primary Care

System Leadership

Challenged Health Economies

- **Walsall,**
- **Sandwell**
- **Dudley**
- **Staffordshire**

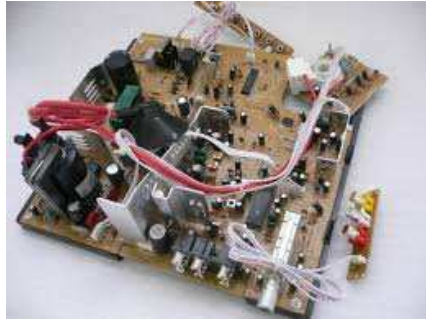


Accountable Care Organisation (ACO)



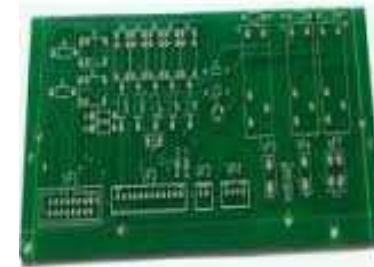
An ACO is a provider led organisation responsible for the delivery of healthcare for a defined population under a capitated budget

Fragmentation



Acute Care

Primary Care



Community
Care

Public Health



Social Services

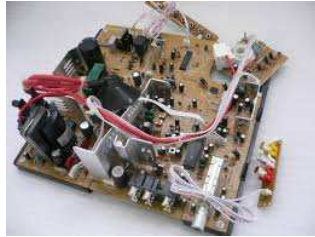
Accountable Care Organisation (ACO)



An ACO brings together the different component parts of care for the patient – primary care, specialists, hospitals, community services, etc. – and ensures that all of the “parts work well together.”

An ACO is a network of doctors and hospitals that shares financial and medical responsibility for providing **coordinated** care to patients in hopes of limiting unnecessary spending. At the heart of each patient’s care is a primary care team.

Accountable Care Organisation (ACO)



CCGs/NHSE are buying individual circuit boards, not the whole TV.

PbR and the current contracting model rewards **more care not better care.**

Where are we at?



RWT VI pilot went live on 1st June 2016

**5 Practices and a population base of circa 23,500 patients
(10% of population)**

- **RWT providing list based services**
- **Full Staff and Business Transfer**
- **GPs part of Trust Management Team**
- **Waves 2 and 3 in process**
- **Wave 4 discussions**



Early Wins



- ✓ **Communication/Changing Perceptions- Learning to work together**
- ✓ **Data Driven Clinical Model**
- ✓ **5 Day services- 10% increase in primary care access**
- ✓ **Social Prescribing – in all practices**
- ✓ **Better Data , Better Care- Data Sharing Agreement**
- ✓ **Enhanced use of Pharmacists, Physios and other Allied Health Professionals**
- ✓ **Released Savings from back office rationalisation**
- ✓ **Public Health VI Practice Profiles and practice action plans for obesity, smoking, alcohol and diabetes in development**

Our Vision:



Staying Well At Home

- Healthy Lifestyles
- Better Prevention
- Self care
- Patient Activation

More Care Closer to Home

- Integrated Community, Primary Care Teams and Acute Teams
- Local Urgent Care
- Access to Specialists/Diagnostics in the community
- Data Driven Care Delivery

World Class Hospital Care

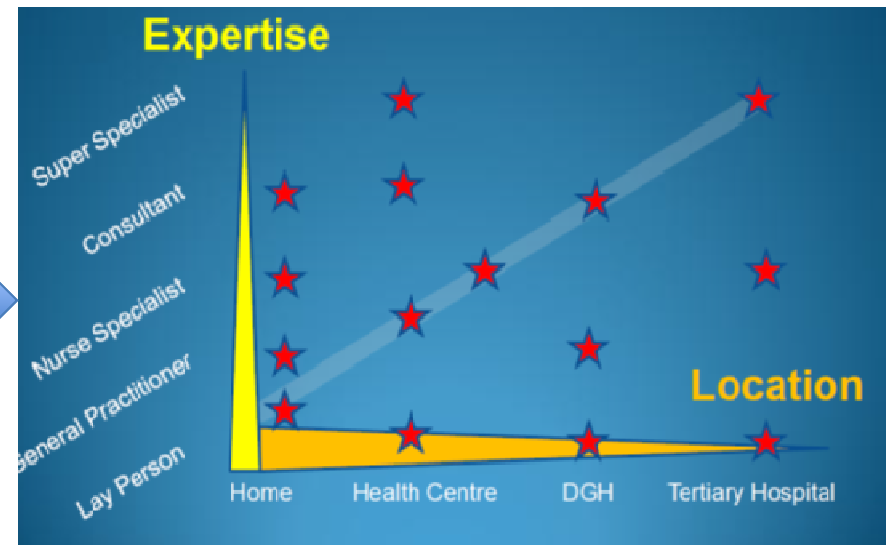
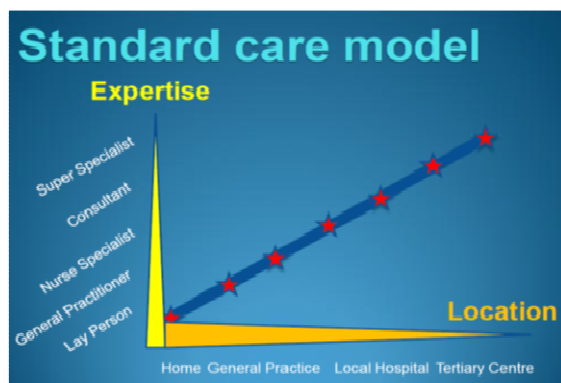
- Co-ordinated planned care, integrated with Primary and Acute Teams
- Upper Quartile Performance
- Black Country Designated Specialist Centre
- Black Country Designated Emergency Centre

Integrated Care Hubs (ICH)



Working with patients, the public, our staff and all health and social care partners we want to develop 5-6 Integrated Care Hubs.

Locality-based, integrated teams of community nursing, mental health and home care staff, working together with medical leadership from GPs and / or consultants



Accountable Care Organisations



RWT's ACO Priorities

- Continual Improvement of Patient Outcomes and Experience
- Ensuring local decision making and accountability remains in Wolverhampton
- Ensuring Local easy access to top quality health care
- Modernised Fit for Purpose Primary Care, Secondary and Community Care
- Rapid access to specialist opinion using a shared IT record
- Enhanced co-ordination between health ,social services & public health
- Reduced bureaucracy and transactional costs
- Flexible use of collective resources
- Continual Innovation

ACO- What is needed to Deliver



- Cultural Change
- Data Driven Clinical Model
- Contractual Framework to support ACO delivery
- Alignment of financial interests
- Clinical integration across primary/secondary/community care
- Comprehensive Organisational Development Strategy
- Local and National Stakeholder Support
- Resources, Legal and Governance