



**INVEST**  
City of Wolverhampton

# Stronger City Economy Scrutiny Panel





## **Regeneration update**

**Thursday 15 July 2021**

# Update to Stronger City Economy Scrutiny Panel



**INVEST**  
City of Wolverhampton

- **Future High Streets Fund**
  - Major bid award of £15.7m (December 2020)
  - Delivery underway – Annual payment c.£10m received
  - Co funding to renew and reshape high streets in a way that drives growth
- **Towns Fund**
  - Major bid award of £25m to support ten shortlisted schemes (March 2021)
  - MHCLG Final gateway process August 2021, funding expected September
  - Town Investment Plan required to demonstrate growth plans across three centres
- **Levelling Up Fund**
  - LUF is a £4bn competitive fund administered by the Treasury, DfT and the MHCLG covering England for next 4 years up to 2024-25
  - Tranche 1 Bid for £20m submitted 17 June for Wolverhampton South West (CLQ)
  - CLQ COWTech funding confirmed through WMCA to deliver whole project (£7.7m)
  - Commanding MP support for constituency led plans up to £20m
- **Community Renewal Fund**
  - £220 million additional funding to help places across the UK prepare for the introduction of the UK Shared Prosperity Fund.
  - Competitive process with no pre-set eligibility

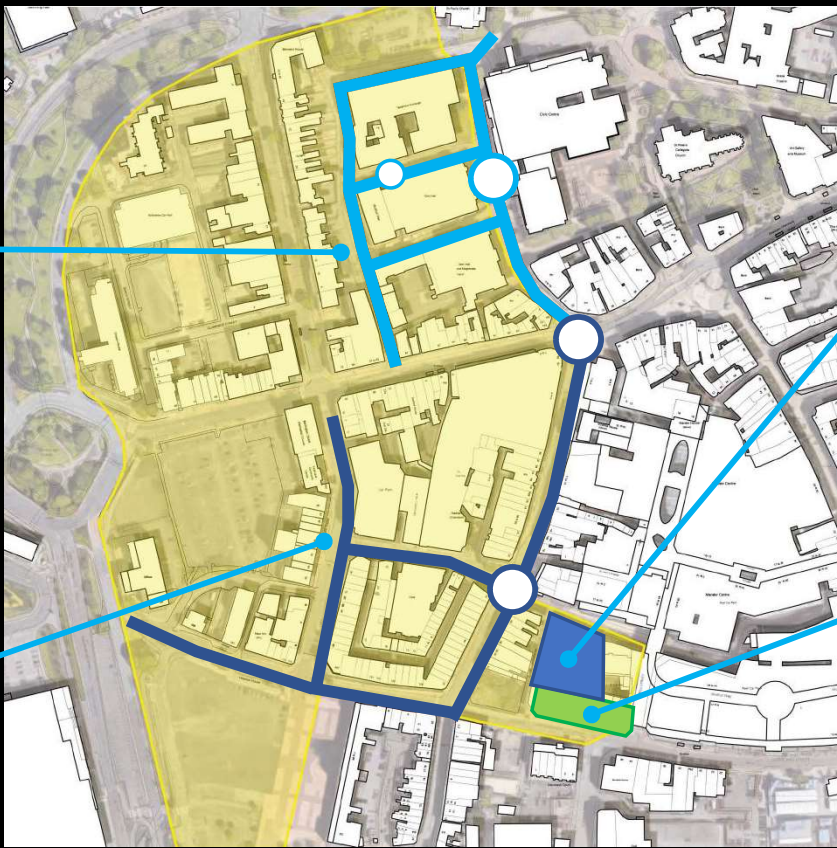
# Future High Streets Fund Update (£15.7m)



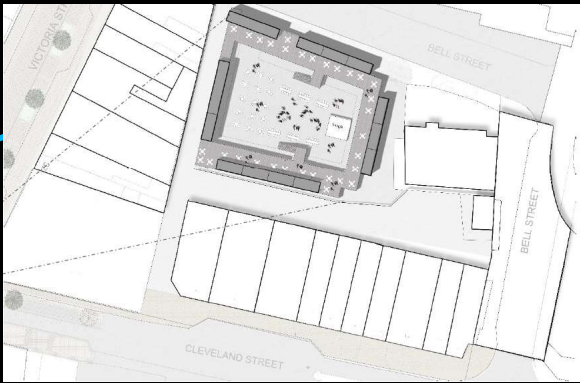
Civic Halls public realm



Victoria Street public realm



Box Park, Bell Street



Cleveland Parade



# Towns Fund – Wolverhampton Investment Plan



Towns Fund Total Bid for £48.3m  
– Blended set of eleven projects submitted Summer 2020



- £25m awarded to Wolverhampton.
- Towns Fund board funding allocations agreed (May 2021). Funding expected September 2021

**WOLVERHAMPTON INVESTMENT PLAN**  
**TOWNS FUND**

The graphic features the INVEST City of Wolverhampton logo at the top. Below it, the text 'WOLVERHAMPTON INVESTMENT PLAN' and 'TOWNS FUND' are prominently displayed in a stylized font. The background is dark with light-colored lines and icons representing various aspects of the fund, such as employment, regeneration, and connectivity.

Employment and Skills				Regeneration and Renewal			
 1	 2	 3	 4	 5	 6	 7	 8
<b>City Learning Quarter</b>	<b>National Brownfield Institute</b>	<b>Wolves at Work</b>	<b>Bilston Learning Quarter</b>	<b>Brewers Yard</b>	<b>Horseley Fields</b>	<b>Arts Park</b>	<b>Events Programme</b>
PROJECT VALUE: £58.1M	PROJECT VALUE: £17.5M (CAP) & £11M (REV)	PROJECT VALUE: £1M (REV)	PROJECT VALUE: £1M (REV)	PROJECT VALUE: £11.7M	PROJECT VALUE: £60.3M	PROJECT VALUE: £6.4M	PROJECT VALUE: £2.23M
MATCH: £48.1M	MATCH: £14.875M	MATCH: £0M	MATCH: £0M	MATCH: £6.7M	MATCH: £55M	MATCH: £3.4M	MATCH: £1.23M
FUNDING ASK: £10M	FUNDING ASK: £1M (REV)	FUNDING ASK: £1M (REV)	FUNDING ASK: £1M (REV)	FUNDING ASK: £5M	FUNDING ASK: £5.3M	FUNDING ASK: £3M	FUNDING ASK: £1M (REV)

Changing Perceptions				Enhancing Connectivity				Vibrancy and Footfall			
 9	 10	 11	 12	 13	 14	 15	 16	 17	 18	 19	 20
<b>City Centre Public Realm - Phase 2</b>	<b>5G Accelerator</b>	<b>Bilston Market</b>	<b>Wednesfield Interventions</b>	<b>City Centre Public Realm - Phase 2</b>	<b>5G Accelerator</b>	<b>Bilston Market</b>	<b>Wednesfield Interventions</b>	<b>City Centre Public Realm - Phase 2</b>	<b>5G Accelerator</b>	<b>Bilston Market</b>	<b>Wednesfield Interventions</b>
PROJECT VALUE: £12M	PROJECT VALUE: £4.3M	PROJECT VALUE: £7.5M (CAP) & £0.25M (REV)	PROJECT VALUE: £4M (CAP) & £0.6M (REV)	PROJECT VALUE: £12M	PROJECT VALUE: £4.3M	PROJECT VALUE: £7.5M (CAP) & £0.25M (REV)	PROJECT VALUE: £4M (CAP) & £0.6M (REV)	PROJECT VALUE: £12M	PROJECT VALUE: £4.3M	PROJECT VALUE: £7.5M (CAP) & £0.25M (REV)	PROJECT VALUE: £4M (CAP) & £0.6M (REV)
MATCH: £6M	MATCH: £3.3M	MATCH: £0M	MATCH: £0M	MATCH: £6M	MATCH: £3.3M	MATCH: £0M	MATCH: £0M	MATCH: £6M	MATCH: £3.3M	MATCH: £0M	MATCH: £0M
FUNDING ASK: £6M	FUNDING ASK: £1M	FUNDING ASK: £7.75M	FUNDING ASK: £4.6M	FUNDING ASK: £6M	FUNDING ASK: £1M	FUNDING ASK: £7.75M	FUNDING ASK: £4.6M	FUNDING ASK: £6M	FUNDING ASK: £1M	FUNDING ASK: £7.75M	FUNDING ASK: £4.6M

# Levelling Up Fund



## Round 1 – MP Area Wolverhampton South West

- CLQ Phase 2 – City Centre Learning Hub combining a new City Centre College building, improved main Central Library and expanded Adult Education services
- CLQ has a Full Business Case, has passed RIBA Stage 3 Design with planning consent in place and is development ready.
- Bid seeking £20m from LUF submitted on 17 June 2021



## Round 2 – MP Area Wolverhampton South East

- Proposal to focus on Bilston by building on Towns Fund work to potentially include wider improvements to the metro and bus interchange linked to the Pipe Hall and Market projects.



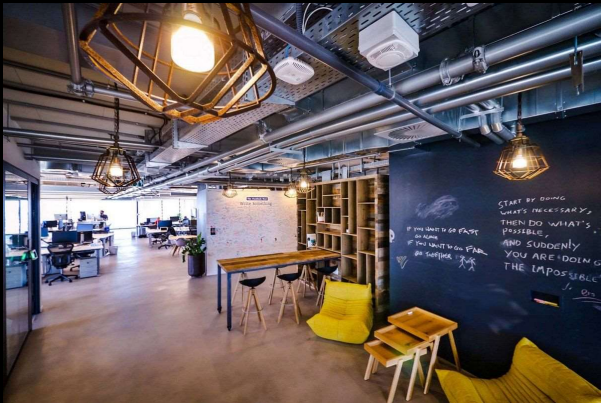
## Round 2 – MP Area Wolverhampton North East

- Proposal under development

# Community Renewal Fund - iGNITE



- iGNITE (innovate, Grow, Navigate, Ideas, Technology, Entrepreneurship)
- Proposed business and enterprise hub at vacant retail unit in i10
- Bringing prominent space back into use with a first-class facility at the heart of the new commercial district
- Funding secured for 2-year lease, fit-out and project management
- Co-working and meeting space, events, training and support to inspire start-ups and growth
- Community Renewal Fund application (£451K)
- Partnership with University of Wolverhampton and Black Country Chamber of Commerce
- Pilot project hosted in facility
- CRF project offer includes support for entrepreneurs, start-ups, graduates, students, young people, SMEs with a focus on digital skills and e-commerce



# Covid Business Grant Support

October- June



NATIONAL SCHEMES	Number Approved	Value Approved
LRSB Closed Lockdown 2	1,190	£1,849,272.00
LRSB Closed Tier 3	502	£428,598.00
LRSB Closed Tier 4	410	£119,851.00
LRSB Open	1,282	£751,302.00
LRSB Sector	14	£14,788.00
LRSB & BSP - Lockdown 3	1,301	£12,236,530.00
Wet-led Pubs	83	£83,000.00
RESTART GRANTS	1,083	7,456,101.00
Totals	5,865	£22,939,341.00

ARG and RESTART SCHEMES	Number Approved	Value Approved
ARG - Dec 20	297	283,921.00
ARG - Nov 20	546	760,666.00
ARG Taxi and Private Hire Drivers	666	1,332,000.00
ARG-Closed Businesses Lockdown 3	289	2,461,128.36
ARG-Open Business Lockdown 3	410	2,639,661.00
Supported Testing Business Grant – employee testing	263	109,125.00
Restart Discretionary Grant - Hospitality, Accommodation, Leisure, Personal Care and Gym businesses	38	61,100.00
Restart Discretionary Grant – Not eligible for national scheme	105	134,137.00
Covid Compliant Grant Scheme – small grant for items to help premises to be safe	117	47,750.00
Totals	3,824	15,320,162.36

Grand Total	8,606	£30,803,503.36
-------------	-------	----------------

## Covid Business Grant Support-Schemes

- Many businesses across the city are still looking for financial support. As a result, the Council has focused its efforts to ensure that it can support as many businesses as possible.
- Throughout the past 16 months the city's discretionary scheme has focused on supporting businesses not eligible for the national scheme.
- Over £8 million has supported a wide range of essential and non-essential businesses, those who have been able to open and trade, and those who are still not able to open their doors.
- The grants have been used to support covid safety measures for businesses and their employees, to support restart and investment into their businesses, and help the hospitality supply chain



[www.investwolverhampton.com/towndeal](http://www.investwolverhampton.com/towndeal)



@investwolves



@wolverhamptontoday

