

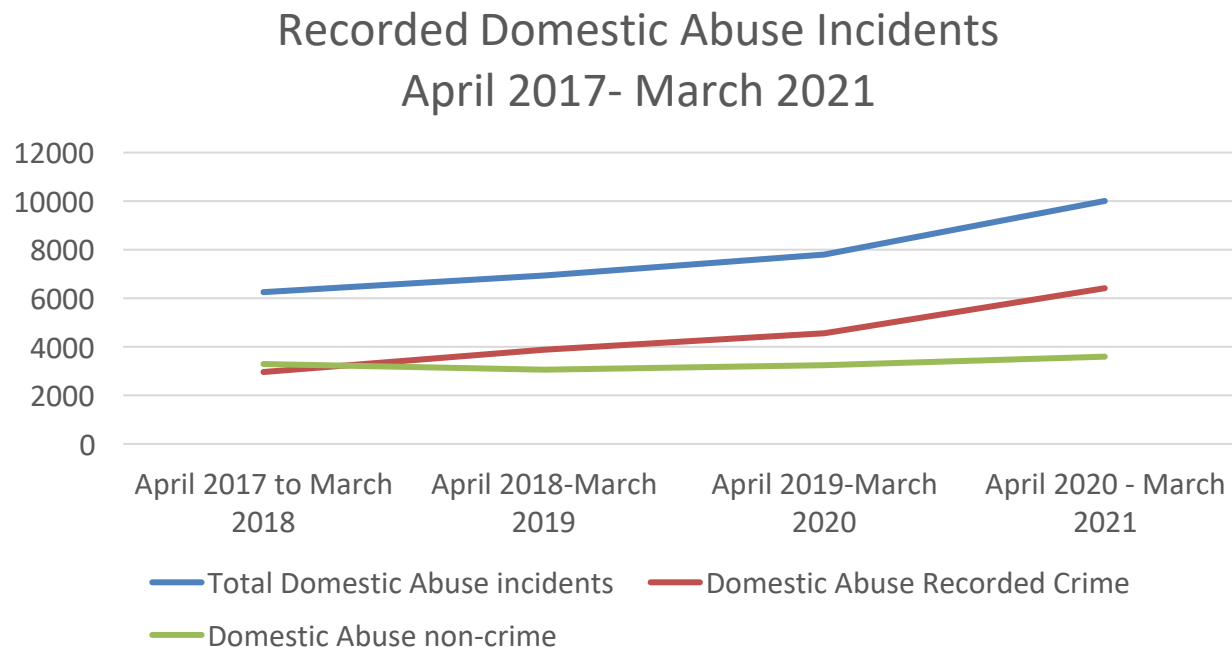
Safer Wolverhampton Partnership Update

19 October 2021

Safer Wolverhampton Partnership (SWP) Priorities

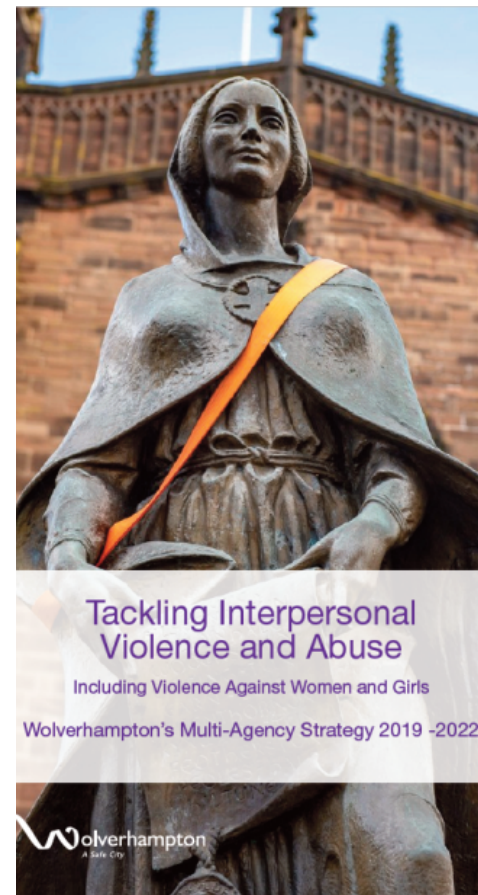
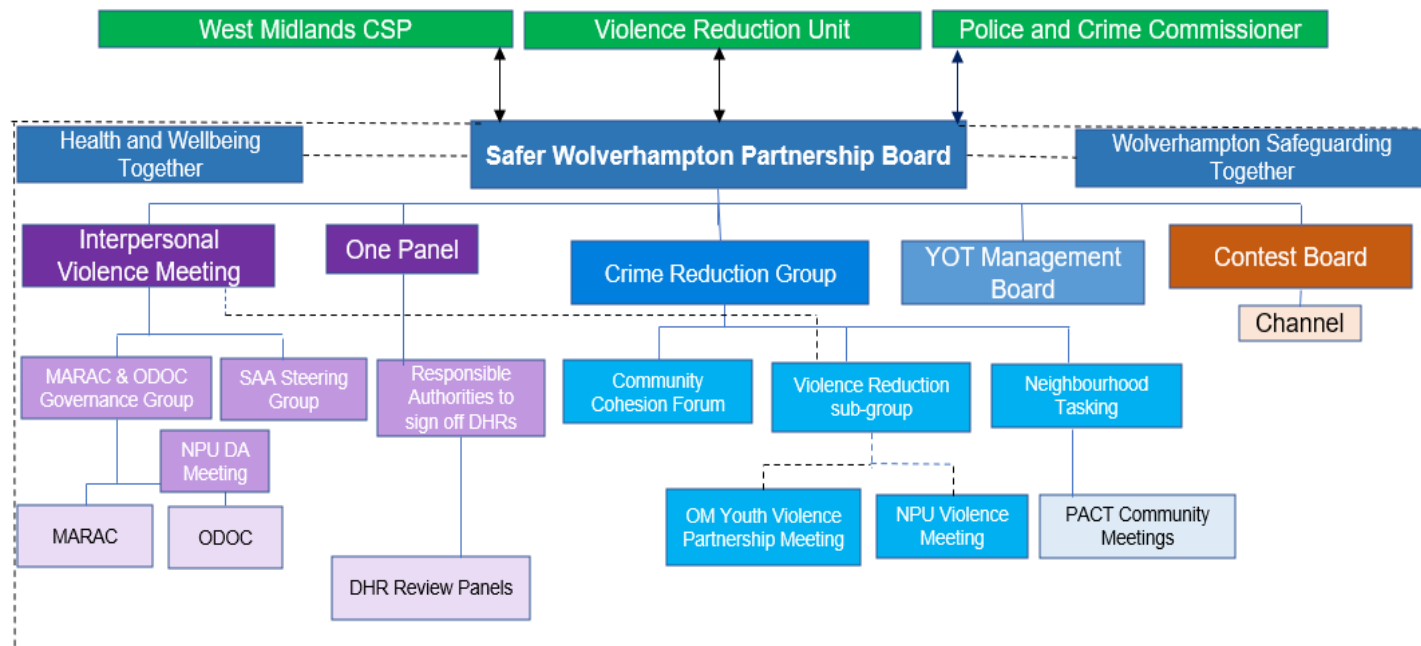


Focus on: Domestic Abuse



Domestic Abuse Activity

Multi-agency governance of the city response to domestic abuse has been reviewed



Activity

Development of domestic abuse needs assessment to steer strategy implementation and future commissioning:

- Analysis of local, regional and national domestic abuse data to understand trends and themes;
- Mapping of local domestic abuse services and their capacity;
- Extensive engagement with professionals and specialist domestic abuse services;
- Focus groups with victims.

Activity

Coordination of domestic abuse response during Covid-19:

- Regular reviews of crime and service data to understand the impact of restrictions;
- Regular communication with specialist domestic abuse services to understand the impact on services, provide infection prevention advice and mitigate against any risks to services to ensure that victims had continued access to specialist support;
- Ensuring that victims were aware that lockdown restrictions did not apply when fleeing abuse and supporting to facilitate movement where appropriate;
- Working closely with neighbouring community safety partnerships and regional partners to ensure a consistent regional response to domestic abuse.

Activity

Delivery of key messages to professionals and victims to ensure that victims of domestic abuse are able to access the support they need:

- Updated training delivered virtually to a range of professionals;
- Promotion of local, regional and national domestic abuse campaigns;
- Successful virtual Orange Wolves campaign – 16 days of action to raise awareness of interpersonal violence and violence against women and girls.

Future Plans and Proposals

- Review of Interpersonal Violence Strategy – to be informed by a full consultation, equalities impact assessment and needs assessment;
- Extension of current strategy focus to incorporate safety of women in public spaces – building on current activity around safety of women at night;
- Ensure that domestic abuse, interpersonal violence and violence against women and girls is central to local implementation of the new Serious Violence Duty;
- Aligning the Interpersonal Violence Strategy with the Tackling Violence and Exploitation Strategy and West Midlands's Police Violence, Abuse and Intimidation against Women and Girls Strategy (2021-2024).

wolverhampton.gov.uk